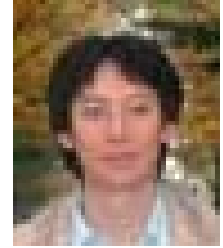


## IMS Researcher Profile

**Institution: UM**



Name: Shiming Duan

Contact Info: duansm@umich.edu  
734-615-7445

Expertise: N/A

Current Research Activities: Global Stability Analysis, Estimation of Region of Attraction

Dissertation/Thesis Topics: Stability Analysis of Piecewise Affine Systems

Project 1: Design of Thermal Management System for Clutch Systems

- Develop temperature models for clutch components/sub-systems
- Design of control strategy to realize temperature feedback and improve torque accuracy of clutch systems

Skills: MATLAB

Previous Background: Student

Publications: N/A